

# Visualizations

Last Modified on 09/05/2025 5:22 pm EDT

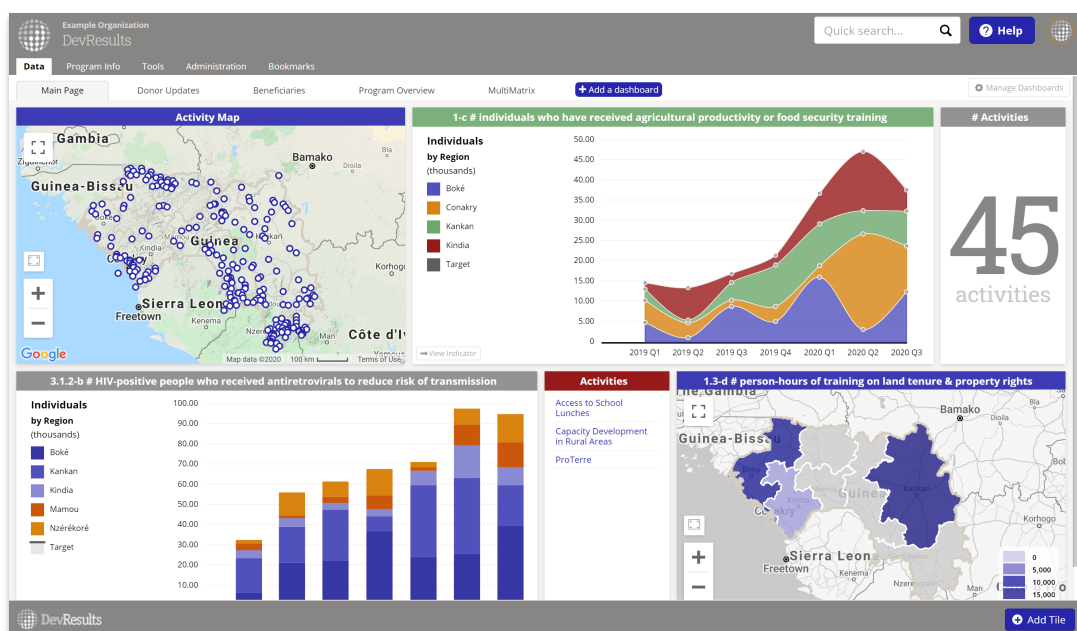
DevResults offers four main areas for visualizing data:

- **Dashboards:** Assemble and share multiple visualizations
- **Indicator Reports:** Configure graph, matrix, map, and pie chart visualizations for each indicator
- **MultiMatrix:** Generate a report about multiple indicators
- **Performance Overview:** View thumbnail graphs by framework objective and per project (respectively)

## Dashboards

When you log in to DevResults, the first page you see is a dashboard. Each user can create and design as many dashboards as they'd like to show information relevant to them. For information about dashboards, check out the knowledge base articles for:

- **Define a Dashboard**
- **Video Tutorial: Dashboards**
- **Partner Dashboards**



## Indicator Reports

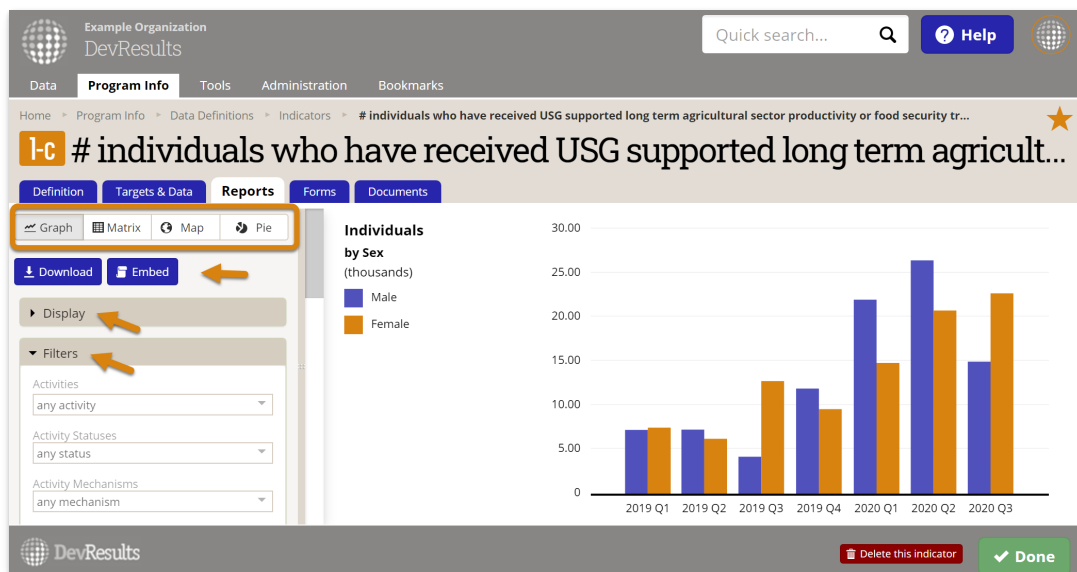
Visualize data for a single indicator with **Indicator Reports**. Navigate to **Program Info > Indicators > select indicator** and choose the **Reports** tab.

All indicators come with four visualizations options:

- **Graph**
- **Matrix**
- **Map**
- **Pie**

Each visualization can be configured using the options in the left hand panel. The **Display** section lets you choose how the visualization should look, and the **Filter** section lets you choose what data is included.

The **Download** button lets you export a PNG file of your visualization (either with or without the indicator name at the top). If you have appropriate permissions, you can use the **Embed** button to generate the HTML code to let you share a dynamic visualization on an external web page.



## MultiMatrix

**MultiMatrix** is a powerful query tool for organizing and analyzing data for multiple indicators. MultiMatrix works just like the single indicator **Matrix** tool, but for more than one indicator. MultiMatrix reports can be saved to a list of reports or as a dashboard.

Find MultiMatrix in the **Data** menu.

Example Organization

DevResults

Quick search...

?

Help

Data

Program Info

Tools

Administration

Bookmarks

Home

Data

View Data

MultiMatrix

Health Report

Download

Save

Indicators

Display

Disaggregations

Display Values

Result type

Show

Totals

Fiscal Year

Indicators

Display

Disaggregations

Display Values

Result type

Show

Totals

Fiscal Year

Matrix

Incremental

Cumulative

Actual #

Add a display value...

Code

Name

Ref #

Show

Hide

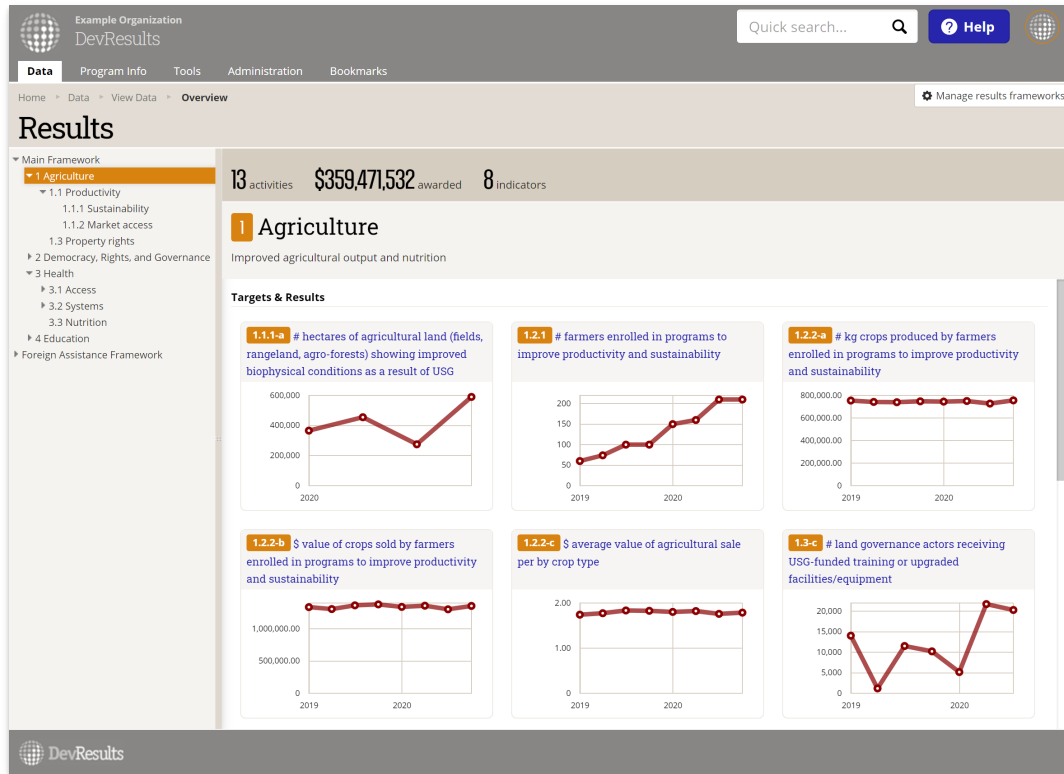
	2019					2020				
	2019 Q1	2019 Q2	2019 Q3	2019 Q4	Total: 2019	2020 Q1	2020 Q2	2020 Q3	Total: 2020	Grand Total
3.1.1-c # MARP reached with individual an...										
Male										
Boké	24,877	75,482	48,242	93,781	242,382	80,119	98,686	85,151	263,956	506,338
Kankan	21,170	27,080	52,659	88,204	189,113	73,931	110,685	46,706	231,322	420,435
Total: Male	46,047	102,562	100,901	181,985	431,495	154,050	209,371	131,857	495,278	926,773
Female										
Boké	20,544	87,824	31,200	60,354	199,922	118,196	93,596	62,354	274,146	474,068
Kankan	23,847	36,576	47,181	72,808	180,412	82,776	105,228	47,292	235,296	415,708
Total: Female	44,391	124,400	78,381	133,162	380,334	200,972	198,824	109,646	509,442	889,776
Total: 3.1.1-c # MARP reached with individ...	90,438	226,962	179,282	315,147	811,829	355,022	408,195	241,503	1,004,720	1,816,549
3.1.2-b # HIV-positive people who received...										
Male										
Boké	4,438	7,732	14,859	24,975	52,004	10,428	12,074	19,397	41,899	93,903
Kankan	11,381	10,216	7,778	3,152	32,527	21,130	22,628	13,698	57,456	89,983
Total: Male	15,819	17,948	22,637	28,127	84,531	31,558	34,702	33,095	99,355	183,886
Female										
Boké	2,194	13,657	7,659	11,847	35,357	13,860	13,706	20,430	47,996	83,533
Kankan	5,711	7,611	17,448	4,402	35,172	14,323	15,026	6,234	35,583	70,755
Total: Female	7,905	21,268	25,107	16,249	70,529	28,183	28,732	26,664	83,579	154,108
Total: 3.1.2-b # HIV-positive people who re...	23,724	39,216	47,744	44,376	155,060	59,741	63,434	59,759	182,934	337,994

DevResults

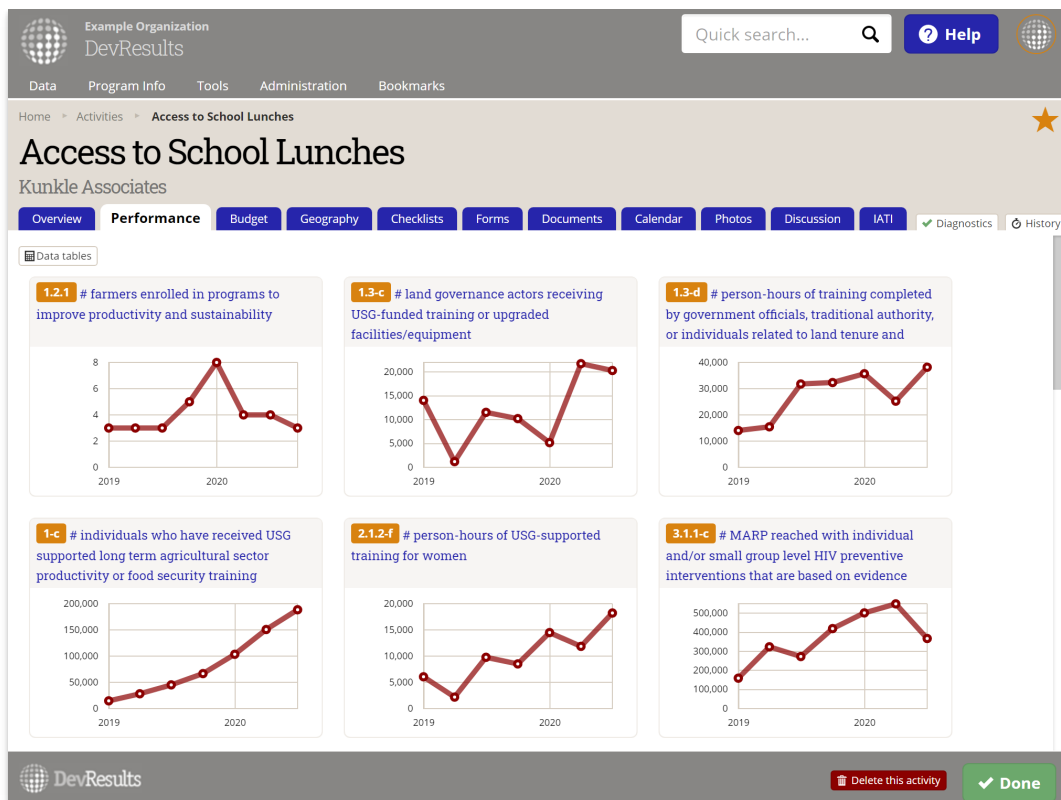
## Performance Overview

For a quick snapshot of indicator data over time, DevResults offers two places where you can view thumbnail graphs of multiple indicators. These graphs do not come with any configuration options. Each graph is displayed either incrementally or cumulatively based on how the indicator's targets are defined on the indicator definition page.

To view indicators for a portion of a results framework go to **Data > Overview** and select an objective from a framework on the left.



To view all indicators for a certain project, go to that project's page (**Program Info > Projects > select project**) and choose the **Performance** tab.



Didn't answer your question? Please email us at [help@devresults.com](mailto:help@devresults.com).

## Related Articles